



# Main Street Station

233 E Main Street, Manasquan, New Jersey

## Availability

- +/- 8,583 SF

## Market Co-Tenancy



## Demographics

Radius	Population	Total Daytime Population	Median Household Income
1 Mile	10,261	10,203	\$160,587
3 Mile	45,644	53,352	\$128,312
5 Mile	117,187	110,014	\$111,693

## Retail for Lease - Contact

Neil Ruppert  
 Ph. 732-743-9938  
 neil@piersonre.com



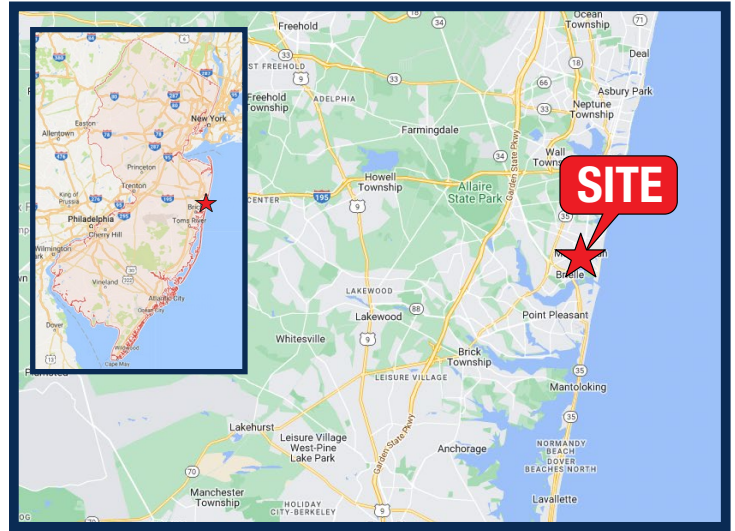
# Main Street Station

233 E Main Street, Manasquan, New Jersey

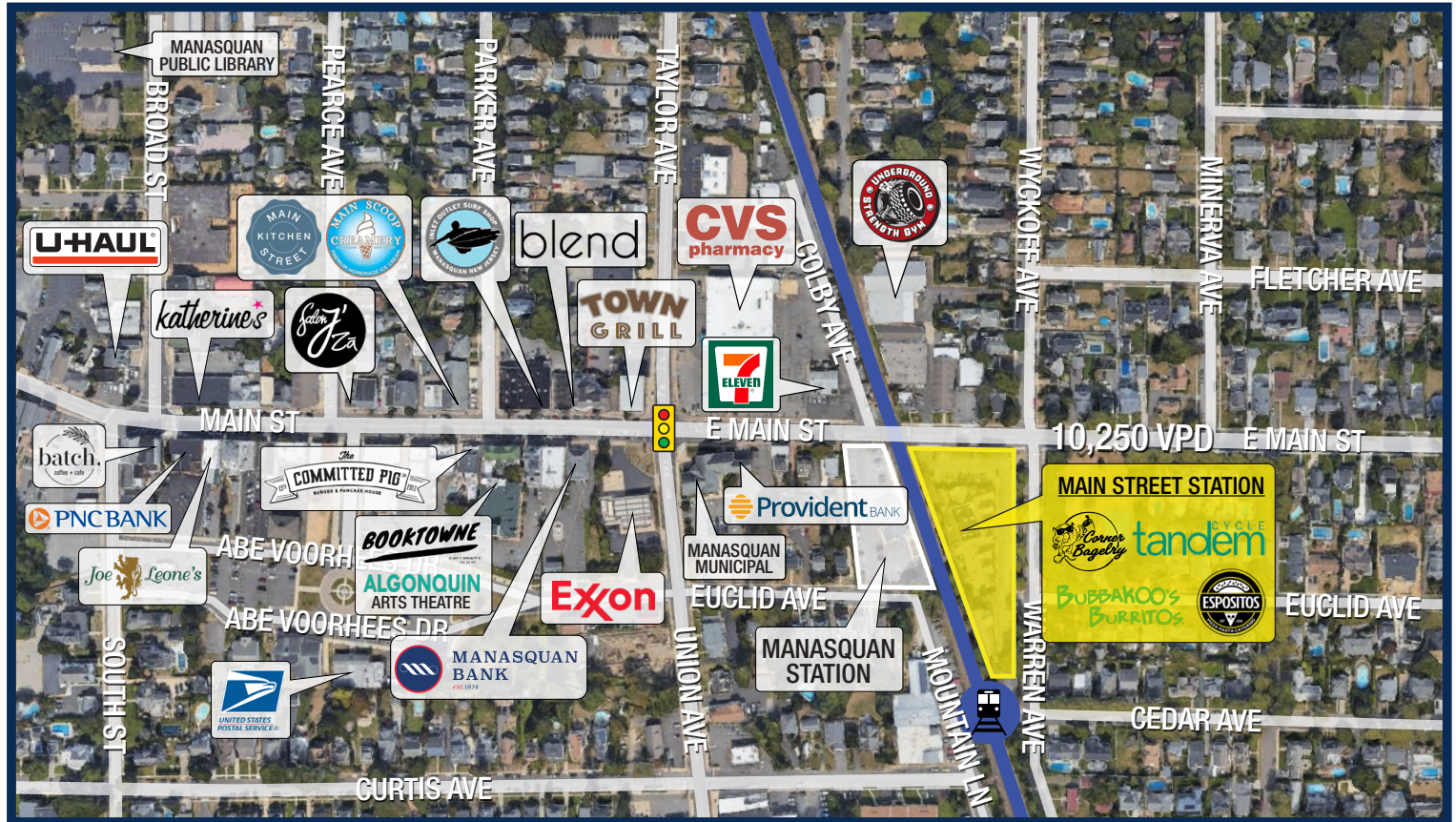
## Site Description

- Ideally situated within the heart of Downtown Manasquan and adjacent to the NJ Transit Train Station
- Diverse co-tenancy creates a consistent stream of foot traffic throughout the day
- Formerly occupied by CVS, who recently relocated in the market to a larger space
- Convenient onsite parking
- Easily accessible to the surrounding towns due to its close proximity to Route 34, Route 35 and Route 71
- Multiple points of ingress and egress via E Main Street and Warren Avenue
- Popular shopping center strategically located on the way to Manasquan's renowned beaches

## State Map



## Market Aerial



## Retail for Lease - Contact

Neil Ruppert

Ph. 732-743-9938

neil@piersonre.com

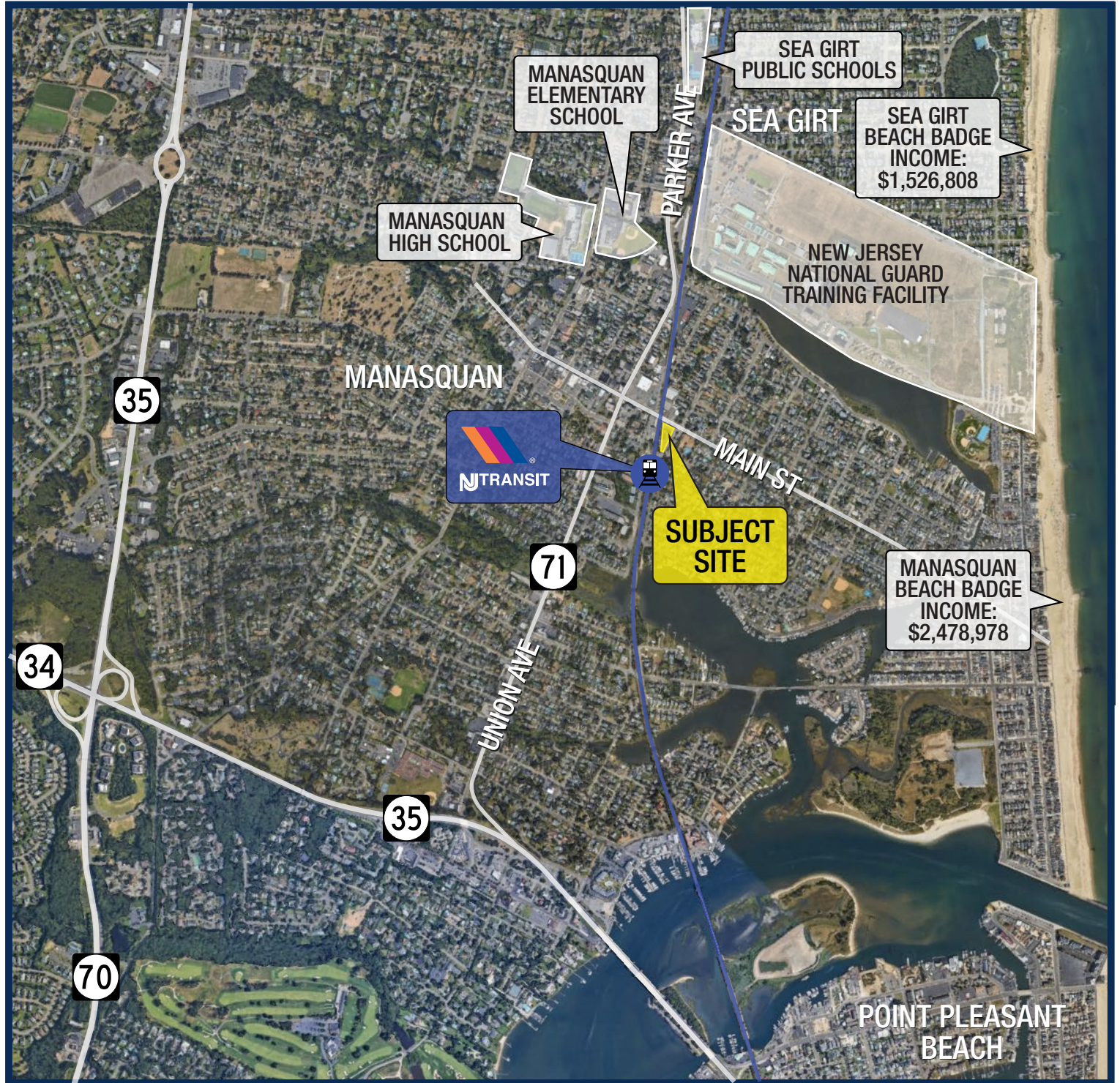
**PIERSON**  
COMMERCIAL REAL ESTATE®

© Pierson Commercial Real Estate LLC. This information has been obtained from sources believed reliable. We have not verified it and make no guarantee, warranty or representation about it. Any renderings, mobile data, general data, projections, opinions, assumptions or estimates used are for example only and do not represent the current or future performance of the property. You and your advisors should conduct a careful, independent investigation of the property and data to determine to your satisfaction the suitability of the property for your needs.

# Main Street Station

233 E Main Street, Manasquan, New Jersey

## Market Aerial



## Retail for Lease - Contact

Neil Ruppert

Ph. 732-743-9938

neil@piersonre.com

**PIERSON**  
COMMERCIAL REAL ESTATE®